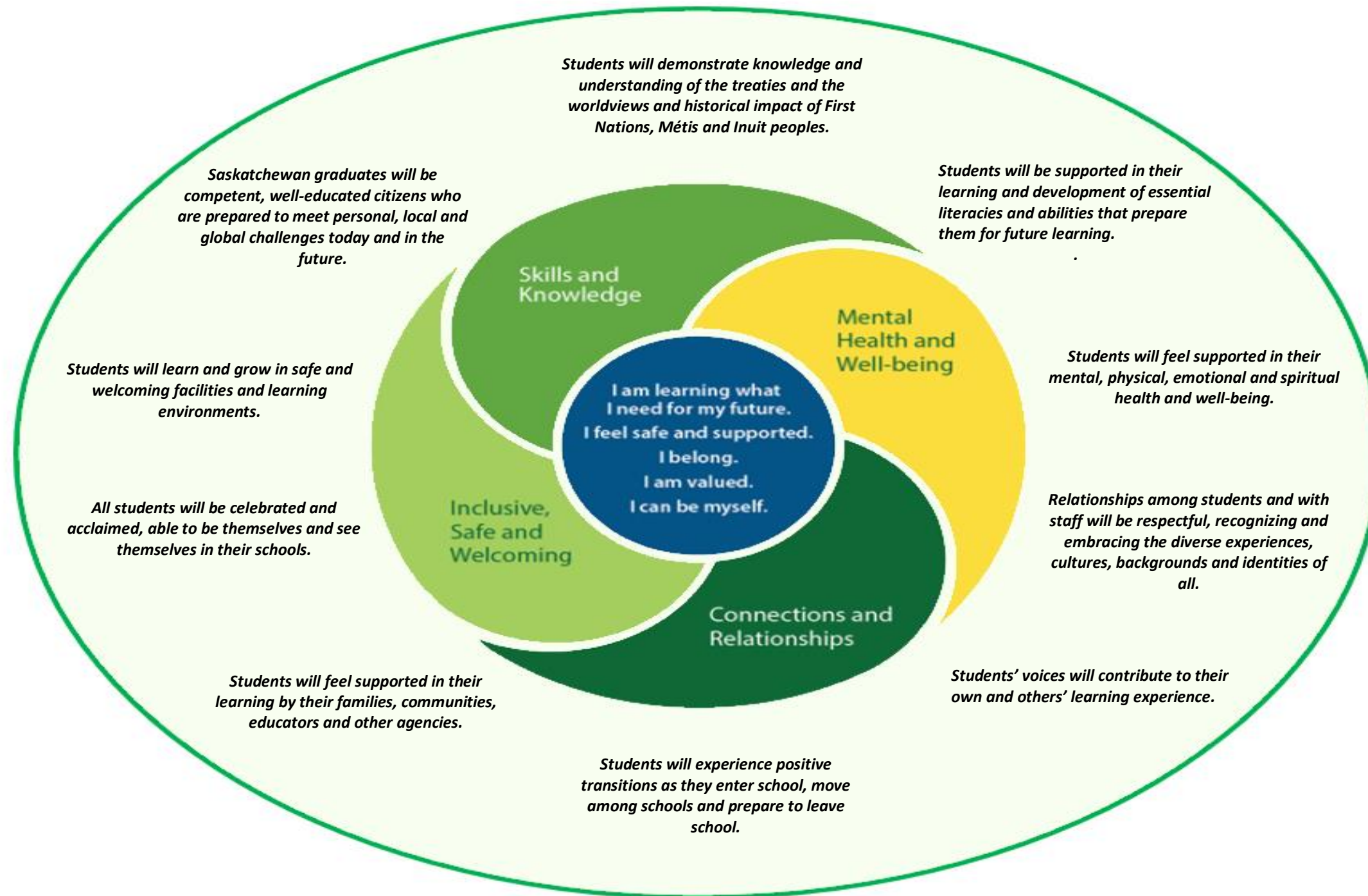




Road To Recovery: Re-Engagement 2021-2022+ Interim High School Strategic Plan

Our mission is to instill the value of knowledge, the dignity of effort, and the worth of the individual



STAFF GOALS - All staff members will create individual goals to align with the Strategic Plan.



- Diversity
- Truth & Reconciliation
- Parent Engagement

GRADE 9 - INCLUSIVE, SAFE & WELCOMING

Students will learn and grow in safe and welcoming facilities and learning environments.

All students will be celebrated and acclaimed, able to be themselves and see themselves in their schools.

Students will feel supported in their learning by their families, communities, educators, and other agencies.

PROFESSIONAL DEVELOPMENT PLAN

SCHOOL ACTION PLAN

Encourage and facilitate student ownership of 1) the school and overall student belonging, and 2) their personal growth and achievement.

SCHOOL ACTION PLAN

Cultivate opportunities for student voice and representation to influence classroom practice and school culture.

SCHOOL ACTION PLAN

Strengthen student/family engagement (rather than just involvement) in student learning and growth, both in the classroom and in the wider school community.

DATA/EVIDENCE

STAFF GOALS: All staff members will create individual goals to align with the school action plan



LEADERSHIP FOCUS AREAS

- Grad & Post Grad Plan
- Engagement
- Student Retention

GRADE 10 - CONNECTIONS & RELATIONSHIPS

Relationships among students and with staff will be respectful, recognizing and embracing the diverse experiences, cultures, backgrounds and identities of all.

Students' voices will contribute to their own and others' learning experience.

Students will experience positive transitions as they enter school, move among schools and prepare to leave school.

PROFESSIONAL DEVELOPMENT PLAN

SCHOOL ACTION PLAN

Focus on our school's diversity and have discussions on anti-racism.

SCHOOL ACTION PLAN

Engage in conversations with classes around types and frequency of assessments

Engage in PD on Culturally responsive pedagogy in order to use teaching strategies and or resources which reflect our students (examples from around the world)

SCHOOL ACTION PLAN

Re-engage with the "heart" of CAP, check in with students often, encourage peer mentoring, learn about your CAP students.

DATA/EVIDENCE

STAFF GOALS: All staff members will create individual goals to align with the school action plan



- Triple 8
- Assessment & Evaluation

GRADE 11 - SKILLS & KNOWLEDGE

Saskatchewan graduates will be competent, well-educated citizens who are prepared to meet personal, local, and global challenges today and in the future.

Students will demonstrate knowledge and understanding of the treaties and the worldviews and historical impact of First Nations, Métis, and Inuit peoples.

Students will be supported in their learning and development of essential literacies and abilities that prepare them for future learning.

PROFESSIONAL DEVELOPMENT PLAN

Culturally Responsive Pedagogy

Authentic integration of Indigenous Content and Knowledge

PD time as subject groups to collaborate on assessment for, as and of learning

SCHOOL ACTION PLAN

Celebrate student success and promote a culture of lifelong learning and curiosity among students through engagement with families and community members.

SCHOOL ACTION PLAN

Foster meaningful connections with First Nations, Metis, and Inuit Knowledge keepers and promote authentic integration of indigenous content and knowledge across curricular areas.

-provide PD opportunities for teachers based around culturally responsive pedagogy.

SCHOOL ACTION PLAN

Develop and implement diagnostic assessments to identify essential curricular components for student success. Implement assessments for, as and of learning to allow for student success across the curriculum. Use of student supports to increase mastery of key skills and abilities.

-Focus on student centered Tier 1 supports

DATA/EVIDENCE

STAFF GOALS: All staff members will create individual goals to align with the school action plan



- Our School
- Student Achievement Committee

GRADE 12 - MENTAL HEALTH & WELL-BEING

Students will feel supported in their mental, physical, emotional and spiritual health and well-being.

GOALS

GOALS

PROFESSIONAL DEVELOPMENT PLAN

Trauma Informed Practice

SCHOOL ACTION PLAN

Incorporate mental health and wellness days/workshops for all grade groups.

- Time management
- Coping strategies
- Study skills/Memory
- Sleeping Habits
- Healthy Habits

SCHOOL ACTION PLAN

Building culture and engagement for ALL students. Fostering wellness through belonging and feeling connected to the school community.

SCHOOL ACTION PLAN

Provide professional development and or support opportunities around trauma-informed practice/wellness-based teaching practices. Allowing students to have an active role in their mental wellness planning.

DATA/EVIDENCE

STAFF GOALS: All staff members will create individual goals to align with the school action